



## CONCEPT-K13

*Economical, available potassium*

Concept K-13 now gives you the ability to blend potassium with UAN, helping to balance the N to K ratio, which is important to the efficiency of both nutrients. Use in soil applications only.

- Aids in strengthening plant stalks and stems
- Increases drought tolerance through proper potassium levels in plants
- Delivers potassium which is vital to photosynthesis

### APPLICATION RATE

Planter Application: 2x2 or similar - 1-10 gal. per acre

Sidedress or Y-Drop Application: 2-20 gal. per acre

Fertigation: 2-20 gal. per acre

### GUARANTEED ANALYSIS

Soluble Potash ( $K_2O$ ): ..... 13%

**Derived from:** Potassium Chloride

## BUNCHA BUGS DF

*Unlock your soil's true potential*



Using our proprietary Bio-Tek technology, Concept Agri-Tek has been able to formulate a large consortium of bacteria, fungi, protozoa, and bio-stimulants designed to enhance soil and plant health.

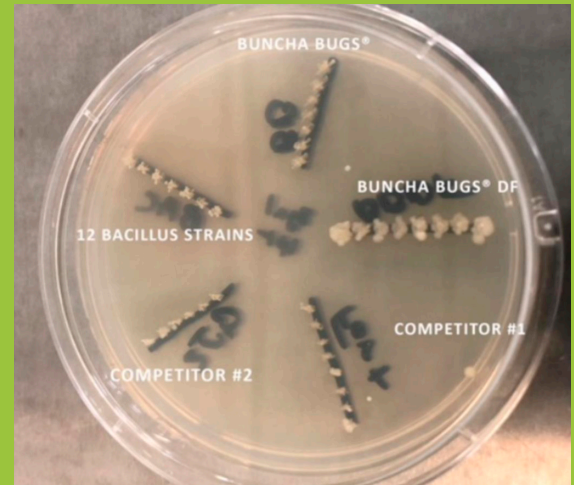
- Increases available N, P, K, and micronutrients in the soil
- Increases soil tilth, percolation, and water retention
- Increases biomass above and below ground level

### APPLICATION RATE

Planter Application: 1 oz per acre

Fertigation: 2 oz per acre

### BUNCHA BUGS® DF WITH BIO-TEK VS COMPETITORS



## BIOVATE® XP

*The ultimate microbe food source*



Biovate® XP is a specific blend of clean, powerful soil and plant stimulants not found in ordinary fertilizers. Biovate® XP provides a complex food source to boost microbial populations in the soil.

- Aids in plant health during stressful situations.
- Increases microbial activity by providing energy to developing plants
- Pairs with Buncha Bugs DF® to increase microbial development and effectiveness
- Promotes root growth and development

### APPLICATION RATE

Planter Application: 16 fl. oz. per acre

Broadcast: 32 fl. oz. per acre

Fertigation: 32 fl. oz. per acre

### GUARANTEED ANALYSIS

Cobalt (Co): ..... 0.01%

Manganese (Mn): ..... 0.05%

**Derived from:** Cobalt Sulfate, Manganese Sulfate

### DIFFERENCE AFTER 7 DAYS WITH BIOVATE® XP



## CONCEPT-Z9

*High quality EDTA chelated zinc*

Concept-Z9 is an EDTA chelated 9% zinc product. Zinc is critical to early development and season long plant health.

- Excellent choice for pre-plant and at-plant applications of zinc
- Good mixability with other fertilizers and chemicals

### APPLICATION RATE

Planter Application: 32 fl. oz. per acre

### GUARANTEED ANALYSIS

Zinc (Zn): .....9%

**Derived from:** Zinc EDTA

## TOTAL-PHOS<sup>®</sup> PLUS

*Maximum phosphorus with nutrient releasing technology*



Total-Phos Plus is a low salt starter fertilizer with our Bio-Tek technology added. The unique technology in Concept Plus makes nutrients more available for plant uptake, by breaking down organic material into molecules small enough for plants to absorb through their cell walls

- Provides maximum phosphorus safely at planting
- Encourages seedlings to develop more rapidly, increases water use efficiency, and promotes early plant formation and growth
- Low-salt fertilizer

### APPLICATION RATE

Planter Application: 1-8 gal. per acre

Broadcast Application: 1-12 gal. per acre

**Note:** For proper application rates suitable for your soil type, consult with a trained representative at Concept Agri-Tek.

### GUARANTEED ANALYSIS

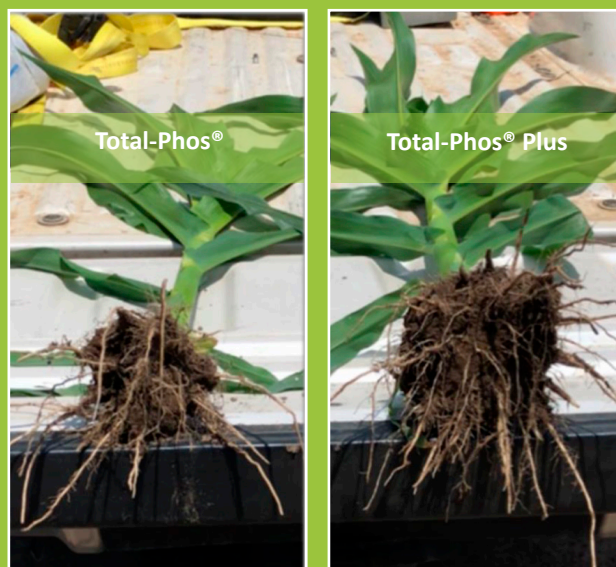
Nitrogen (N): ..... 8%

Phosphorus (P<sub>2</sub>O<sub>5</sub>): .....29%

Potassium(K<sub>2</sub>O): .....2%

**Derived from:** Ammonia, Urea, Phosphoric Acid, Potassium Hydroxide

### DIFFERENCE AFTER USING TOTAL-PHOS<sup>®</sup> PLUS



## MICRO-PAK<sup>®</sup>

*Micronutrient package specifically formulated for early season nutrition*

Micro-Pak is a specific blend of micronutrients that targets early plant vigor, nutrition, and health; formulated to be applied with pre-plant and at-planting applications.

- Includes manganese that increases potassium uptake
- Includes molybdenum that is vital for nitrogen fixation by rhizobia bacteria
- Includes cobalt that assists in CO<sub>2</sub> absorption

### APPLICATION RATE

Planter Application: 32-64 fl. oz. per acre

**Note:** For proper application rates suitable for your soil type, consult with a trained representative at Concept Agri-Tek.

### GUARANTEED ANALYSIS

Sulfur (S): .....2%

Combined Sulfur (S): .....2%

Cobalt (Co): .....0005%

Manganese (Mn): .....2%

Molybdenum (Mo): .....0005%

Zinc (Zn): .....2%

**Derived from:** Ammonium Thiosulfate, Cobalt EDTA, Manganese EDTA, Sodium Molybdate, Zinc EDTA

## FOLIAR RX®

*Plant food and micronutrients all in one*



Our proven Foliar RX® product just got better! Foliar RX® has always helped with stress but now we have added Stress-Tek® to take it to a new level. Foliar RX® is a specific blend of fulvic acid, micronutrients, enzymes, and other plant and biological stimulants that assist in overall plant health.

- Increases plant health and nutrient uptake
- Decreases environmental stress
- Boosts plant energy throughout the growing season

### APPLICATION RATE

Foliar Application: 32 fl oz. per acre

**Note:** For proper application rates suitable for your soil type, consult with a trained representative at Concept Agri-Tek.



### GUARANTEED ANALYSIS

Nitrogen (N): .....2%  
Potassium (K<sub>2</sub>O): .....1%  
Sulfur (S): .....1.8%  
Boron (B): .....0.1%  
Manganese (Mn): .....1%  
Zinc (Zn): .....1%

**Derived from:** Urea, Potassium Hydroxide, Boric Acid, Manganese Sulfate, Zinc Sulfate

## FOLIAR-K®

*Highest quality foliar potassium with Stress-Tek technology*



Concept Agri-Tek has made a great product even better. Now our Foliar K, which uses potassium acetate, has Stress-Tek technology added to help mitigate stress during the season.

- Lower salt level for less crop injury
- Increases drought tolerance by providing the plant with proper potassium levels
- Helps protein synthesis by increasing the plants ability to convert nitrogen to protein

### APPLICATION RATE

Foliar Application: 0.5-2 gal. per acre

**Note:** For proper application rates suitable for your soil type, consult with a trained representative at Concept Agri-Tek.

### GUARANTEED ANALYSIS

Nitrogen (N): .....0%  
Phosphorus (P): .....0%  
Potassium (K<sub>2</sub>O): .....24%

**Derived from:** Potassium Acetate

## BIO-AID

*Concept Agri-Tek's first EPA-registered fungicide*

Bio-Aid is a fungicide that delivers an initial contact kill, and suppresses and controls Phytophthora, Pythium and Downy Mildew.

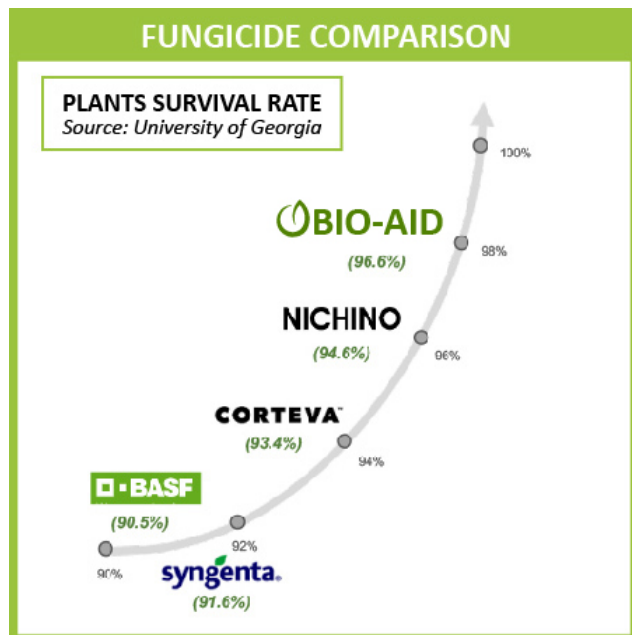
- Safe to the user and to the environment
- Provides contact control of a wide range of fungal pests
- Cost comparative at two applications versus popular commercial competitors

### APPLICATION RATE

Foliar Application: 32 fl oz per acre

### GUARANTEED ANALYSIS

Mono- and di-potassium salts of Phosphorus Acid\* .....45.5%  
 Other Ingredients.....54.5%  
 TOTAL.....100%



## SWEET SUCCESS

*Energize your plants and biology*

Sweet Success is an excellent, clean energy source that aids in keeping plants healthy and vibrant. A blend of natural sugars to boost a plant's energy and brix levels. Higher brix equates to healthier plants and sweeter fruit.

- Increases brix levels in plants which can result in natural protection against leaf feeding insects
- Delivers a diverse sugar formulation to feed many types of microbes rather than a select few

### APPLICATION RATE

Planter Application: 10-16 fl oz. per acre  
 Foliar Application: 16-32 fl oz. per acre

## CALBOR

*Finally a foliar calcium that works!*



Using Concept Agri-Tek's TransMaxx technology, we have created a foliar product that effectively delivers a blend of calcium and boron into the tissues of the plant with unrivaled efficiency.

- Gets calcium and boron into the plant
- Increases water uptake and retention
- Aids in pollination and retention of fruiting bodies

### APPLICATION RATE

Foliar Application: 16-32 fl. oz. per acre

### GUARANTEED ANALYSIS

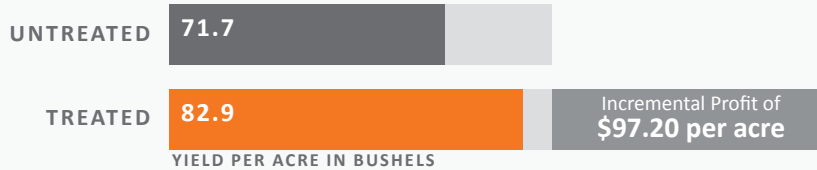
Calcium (Ca): .....10%

Boron (B): .....3%

**Derived from:** Calcium Carbonate, Boric Acid

## THE EFFECT OF CALBOR ON SOYBEANS

SOUTHERN AG SERVICES | MANTEE, MS  
2018 SOYBEANS



- The price of soybeans was calculated at \$9.75 per bushel
- The cost of CALBOR was calculated using a 16 fl oz. application per acre
- The cost of CALBOR was calculated at \$6.50 per acre

## FULVIC FORCE

*Nature's Nano particle*



Increases absorption and mobilization of herbicides, fungicides and foliar fertilizers. Fulvic particles also provide a unique health benefit to applied crops.

- Increases plant health and nutrient uptake
- Decreases environmental stress
- Boosts plant energy throughout the growing season

### APPLICATION RATE

Foliar Application: 6-20 fl oz. per acre

### INGREDIENTS

Fulvic Acid Complex: .....8%

